

# 1Kb DNA Ladder Marker

Catalog No. **SDMI100** , 0.42 mg DNA

Ready-to-use Premix

## Product Description:

The STRONG 1 Kb DNA Ladder Marker consists of 11 DNA fragments size ranging from 0.2 to 10 Kb. Plasmids were completely digested by appropriate restriction endonucleases, phenol extracted, ethanol precipitated and dissolved in 1X TE buffer. Digested products were then mixed to make a ready-to-use Premix. This marker represents **11 discrete fragments** (in base pairs): 10000, 8000, 6000, 5000, 4000, **3000**, 2000, 1500, **1000**, 500, 200. Enhanced intensity of **1Kb** and **3Kb** fragments was designed for clearer determination of electrophoresis result.

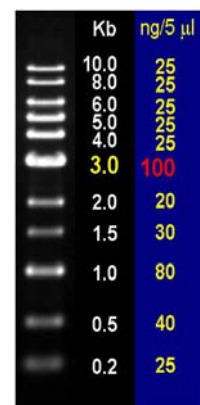
**Recommended loading:** 5.0  $\mu$ l / loading

**Concentration:** 0.42 mg DNA / 500  $\mu$ l.

- 10 mM Tris-HCl (pH 8.0)
- 1 mM EDTA
- 1X loading buffer

## 6 X DNA Loading Buffer:

- 0.1 % bromophenol blue
- 0.1 % xylene cyanol
- 0.1 % orange G
- 60 % glycerol
- 60 mM EDTA.



0.8% agarose/ 1X TAE

## Quality control:

1. Agarose gel analysis shows that the 11 DNA bands from 0.2 to 10 Kb are distinguishable. All bands must form a gradient.
2. This product was tested in restriction enzyme buffer for one week at 37°C, resulting no visible DNA degradation.

## \*Note:

1. The strongest bright band at **3000 bp** serves as a reference.
2. Storage at -20°C is recommended.

**Strong Biotech Corporation** This product is for research use only. Not for use in diagnostic procedures. Ver2.0, 2009  
WR06, 17F No.3, YuanQu St., Nankang, Taipei 115, Taiwan. R.O.C. TEL: (886-2) 2655-8659 FAX: (886-2) 2655-7368