

# Prestained Protein Marker II

Catalog No. PPMII100

Ready-to-use Premix in 500 µl gel loading buffer, **Dual Color**

## Product Description:

Prestained Protein Marker II, middle molecular weight range, resolved to 8 sharp bands when analyzed by SDS-PAGE, is a mixture of purified proteins covalently coupled to blue and orange chromophore. It consists of 8 proteins ranging in apparent molecular weight from approximately 15 kD to 150 kD. Prestained Protein Marker II is supplied in gel loading buffer and ready-to-use.

## Applications:

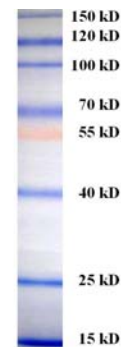
- Molecular weight estimation
- Monitoring protein transfer efficiency onto membranes during Western blotting
- Monitoring electrophoresis separation

## Recommended Usage:

- Thaw the Marker either at room temperature or 37-40°C for 1 minute if any solids was precipitated at -20°C.
- After a quick spin, load directly onto a gel:
  - **For blotting:** load 3 µl for mini-gels and 6 µl for full length gels.
  - **For visualizing** during electrophoresis: load 5 µl for mini-gels and 10 µl for full length gels.

## Quality Control:

- Tested in SDS-polyacrylamide gel electrophoresis and Western blotting



6-15%SDS-PAGE / Blot

**Effective Size Range: 15 kD to 150 kD**

## Contents:

- 0.2-0.8 mg/ml of each protein
- 70 mM Tris-HCl (pH 6.8)
- 33mM NaCl
- 1 mM EDTA
- 2% SDS
- 5 % 2-mercaptoethanol
- 10% glycerol

## Storage Condition:

- Aliquot to prevent freeze and thaw cycles.
- Shelf Life: One year at -20 °C.

## Note:

- **This product is for research use only.**

**Strong Biotech Corporation** This product is for research use only.  
WR06, 17F, No.3, YuanQu St., Nankang, Taipei 115, Taiwan. R.O.C.

**Not for use in diagnostic procedures. Ver2.0, 2009**  
TEL: (886-2) 2655-8659 FAX: (886-2) 2655-7368